

Capturas de datos de biodiversidad

Acciones realizadas por el Gobierno de Aragón

Chema Martínez

Sección Biodiversidad

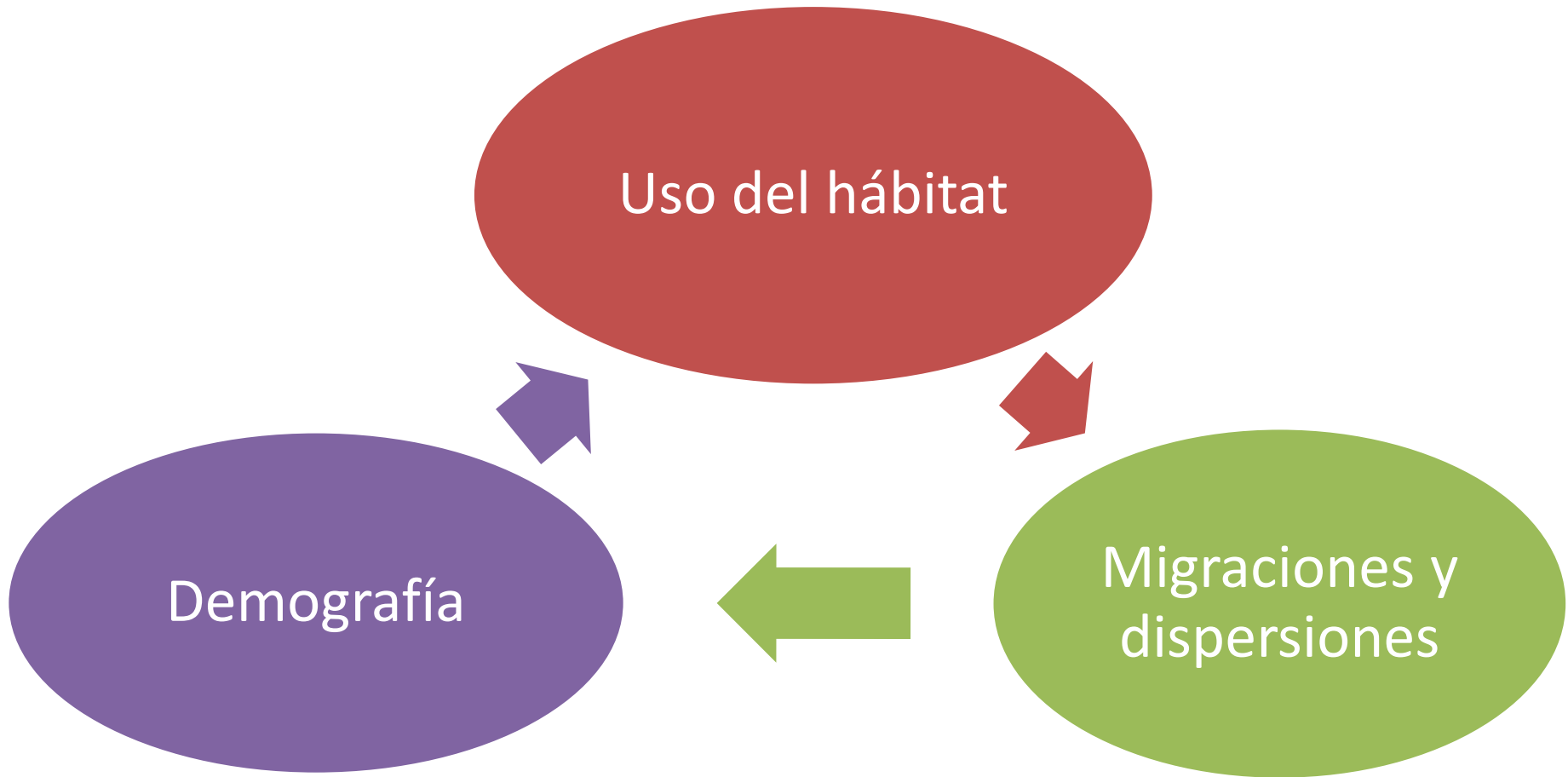
Huesca, 10 de noviembre de 2021



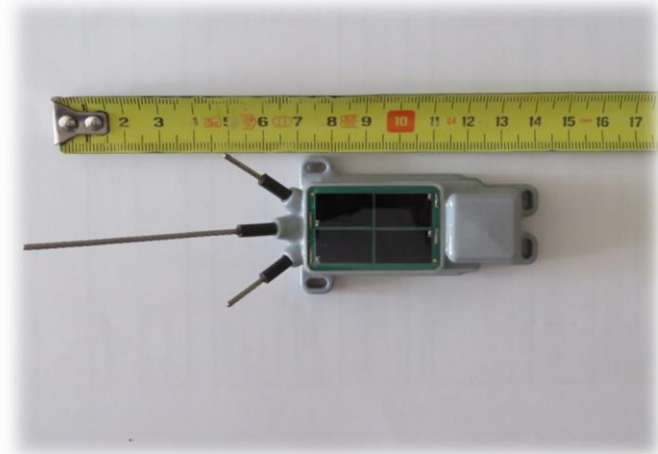
**GOBIERNO
DE ARAGON**

Departamento de Agricultura,
Ganadería y Medio Ambiente

¿Qué?



Dispositivos



**GOBIERNO
DE ARAGON**

Departamento de Agricultura,
Ganadería y Medio Ambiente

Captura

Dos métodos utilizados:
Jaula trampa y red de cañón.



Captura



**GOBIERNO
DE ARAGON**

Departamento de Agricultura,
Ganadería y Medio Ambiente

Captura

- Captura en nido por personal especializado (GIA)



Arnés

- Emisores con arnés tipo Garcelón o de mochila



Plataformas

Movebank

https://www.movebank.org/cms/webapp?gwt_fragment=page=studies

MOVEBANK
for animal tracking data

Data Help Tools Archiving News

Search documentation About Login/Register

Search Studies

Studies where I can see all data

Filter by Study Name

Study - White Stork Denmark
[Animals](#) [Tags](#) [Files](#) [Argos Feeds](#) [File Formats](#)

White Stork Denmark

- ["Proyecto Eremita" Geronticus eremita Reintroduction in Andalusia \(Spa\)](#)
- [\(Interreg SI-Hr CIGRA\) Sterna hirundo GPS-UHF Croatia](#)
- [1-mstorhas](#)
- [1000 Cranes. Russia. Caspia.](#)
- [2015 Tsinghua waterfowl \(Yangtze\)](#)
- [2019 Female ducks](#)
- [3D flights of European free-tailed bats](#)
- [3D migration flights of common noctules \(data from O'Mara et al. 2019\)](#)
- [A boreal songbird's migration across North America and the Atlantic Oce](#)
- [A week in the life of a pygmy blue whale](#)
- [ABoVE: BC Atlin Caribou](#)
- [ABoVE: Boelman Alberta American Robins](#)
- [ABoVE: Boutin Alberta Grey Wolf](#)
- [ABoVE: Boutin Alberta Moose](#)

Study Details

View Download Env-DATA

Study Name	White Stork Denmark
Contact Person	JessFred (Jess Frederiksen)
Principal Investigator	Anders P. Tøttrup/Kasper Thorup
Citation	not set
Acknowledgements	not set
Grants used	Storkene.dk
License Type	Custom
License Terms	not set
Study Summary	Migration routes of the small Danish population of white storks.
Study Reference Location	
Longitude	12.578
Latitude	55.687
Movebank ID	1578840076

Study Statistics

Number of Animals	5
Number of Tags	4
Number of Deployments	5
Time of First Deployed Location	2021-06-19 09:00:23.000
Time of Last Deployed Location	2021-11-08 10:00:17.000
Taxa	Ciconia ciconia
Number of Deployed Locations	109827
Number of Records	Deployed (outliers) / Total (outliers)
GPS	109827 (0) / 113834 (0)
Acceleration	56025 (0) / 76478 (0)



Plataformas

The screenshot shows a web browser window with the address bar displaying <https://www.glosendas.net/cpanel/>. The page title is "OrniTrack Control Panel - Login". The main content area contains a login form with the following elements:

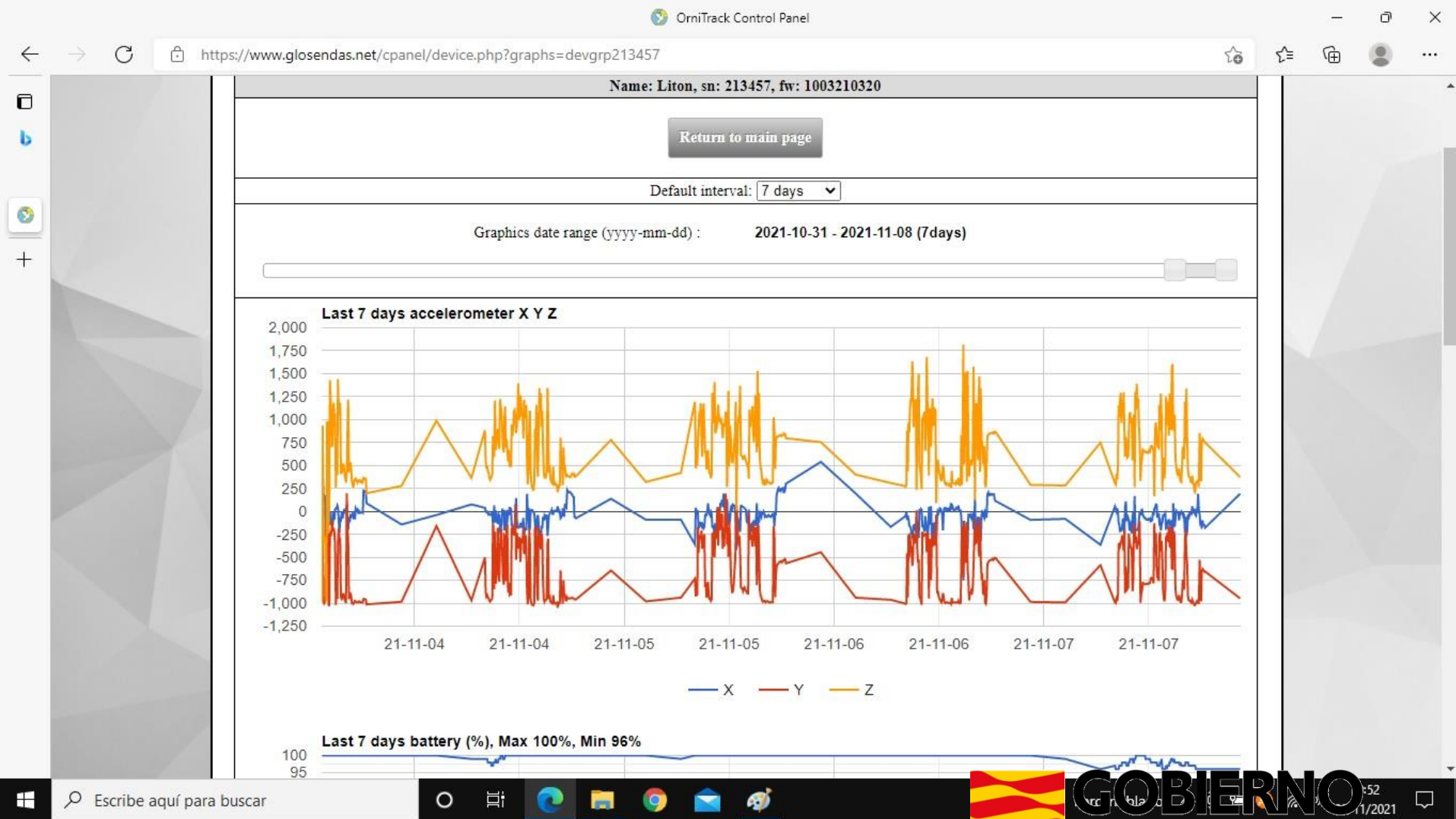
- A "User:" label followed by a text input field.
- A "Password:" label followed by a password input field.
- A "Login" button centered below the input fields.

At the bottom left of the page content, there is a footer with the text: "@2021 UAB 'Glosendas'" and "Cnt: 625:505551".

The browser's taskbar at the bottom shows the Windows Start button, a search bar with the text "Escribe aquí para buscar", and several application icons including Edge, File Explorer, Chrome, Mail, and OrniTrack. The system tray on the right shows the time as 11:48 and the date as 11/2021.



Acceso a la información



GOBIERNO
DE ARAGON

Departamento de Agricultura,
Ganadería y Medio Ambiente

52
11/2021


Gestión de la toma de datos

Geo vallado de un cortado de nidificación

Geofence zone 1 configuration							
Rect. 1 lat/lon top-left:	<input type="text" value="43.205"/>	<input type="text" value="-1.372"/>	bot-right:	<input type="text" value="43.204"/>	<input type="text" value="-1.37"/>	<input type="text" value="Enabled"/>	▼
Rect. 2 lat/lon top-left:	<input type="text" value="0"/>	<input type="text" value="0"/>	bot-right:	<input type="text" value="0"/>	<input type="text" value="0"/>	<input type="text" value="Disabled"/>	▼
Rect. 3 lat/lon top-left:	<input type="text" value="0"/>	<input type="text" value="0"/>	bot-right:	<input type="text" value="0"/>	<input type="text" value="0"/>	<input type="text" value="Disabled"/>	▼
Rect. 4 lat/lon top-left:	<input type="text" value="0"/>	<input type="text" value="0"/>	bot-right:	<input type="text" value="0"/>	<input type="text" value="0"/>	<input type="text" value="Disabled"/>	▼
Rect. 5 lat/lon top-left:	<input type="text" value="0"/>	<input type="text" value="0"/>	bot-right:	<input type="text" value="0"/>	<input type="text" value="0"/>	<input type="text" value="Disabled"/>	▼
Rect. 6 lat/lon top-left:	<input type="text" value="0"/>	<input type="text" value="0"/>	bot-right:	<input type="text" value="0"/>	<input type="text" value="0"/>	<input type="text" value="Disabled"/>	▼
Rect. 7 lat/lon top-left:	<input type="text" value="0"/>	<input type="text" value="0"/>	bot-right:	<input type="text" value="0"/>	<input type="text" value="0"/>	<input type="text" value="Disabled"/>	▼
Rect. 8 lat/lon top-left:	<input type="text" value="0"/>	<input type="text" value="0"/>	bot-right:	<input type="text" value="0"/>	<input type="text" value="0"/>	<input type="text" value="Disabled"/>	▼
Rect. 9 lat/lon top-left:	<input type="text" value="0"/>	<input type="text" value="0"/>	bot-right:	<input type="text" value="0"/>	<input type="text" value="0"/>	<input type="text" value="Disabled"/>	▼
Rect.10 lat/lon top-left:	<input type="text" value="0"/>	<input type="text" value="0"/>	bot-right:	<input type="text" value="0"/>	<input type="text" value="0"/>	<input type="text" value="Disabled"/>	▼

Lat: Lon:

Satellite ▼



Google
Conditions d'utilisation Signaler une erreur cartographique

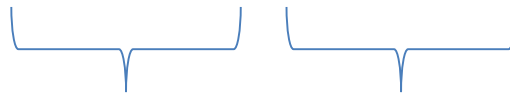
Name: TY6705-IGH-nid4-Helios, sn: 213040, fw: 2004210320		0 settings waiting for transmission to device	
Device name Max 32 characters		TY6705-IGH-nid4-Helios	
Setting	Out of zones	Geofence zone 1	Geofence zone 2
GSM data session interval 600..2073600 seconds	43200	86400	86400
GPS fix interval 0..172800 seconds, 0 - invalid value in GF1 and GF2 zones	300	14400	900
GPS fix interval when battery less than 75% 0 - setting disabled, 1..172800 seconds	600	0	0
GPS fix interval when battery less than 50% 0 - setting disabled, 1..172800 seconds	1800	0	0
GPS fix interval when battery less than 25% 0 - setting disabled, 1..172800 seconds	0	0	0
GPS sleep interval 0..21600 seconds	0	0	0
Enable GPS sleep 0 - disabled, 1 - enabled	Enabled ▾	Disabled ▾	Disabled ▾
GPS sleep from dusk -18..18 - sun angle	0° (UTC 19:40) ▾	0° (UTC 19:40) ▾	0° (UTC 19:40) ▾
GPS sleep till dawn -18..18 - sun angle	0° (UTC 04:29) ▾	0° (UTC 04:29) ▾	0° (UTC 04:29) ▾
GPS burst 0..600 - seconds	0 ▾	0 ▾	0 ▾
Disable GPS burst when battery less than x% 10..90 %	50 ▾	50 ▾	50 ▾

Programación cuando
deje el nido

Programación
en el nido

Sensors log interval <small>0-disabled, 1..172800s, -3-divelink&GPS, -2-divelink, -1-GPS</small>	-1	3600	0
Sensors burst time <small>0..600 seconds</small>	10	5	0
Sensors burst frequency <small>1..50 Hz</small>	20Hz	1Hz	1Hz
Sensors logging options <small>0 - log only accelerometer, 1 - log all sensors</small>	All sensors	Accelerometer only	Accelerometer only
Disable sensors burst when battery less than x% <small>10..90 %</small>	50	50	50
Disable sensors burst when free memory less than x% <small>10..90 %</small>	50	50	50

Enable flight detection <small>0 - disabled, 1 - enabled</small>	Disabled	Disabled	Disabled
Flight detection value <small>1-127 x0.063g</small>	20	20	20
Disable flight detection when battery less than x% <small>10..90 %</small>	50	50	50
Disable flight detection when free memory less than x% <small>5..95 %</small>	50	50	50



Programación del acelerómetro, con cada dato GPS cuando deje el nido.

Programación del acelerómetro cuando esté en el nido.

Descarga de datos

The screenshot shows the Movebank website interface. At the top, there is a navigation bar with links for Data, Help, Tools, Archiving, and News. A search bar is present with the text "Search documentation". Below the navigation bar, there is a search bar with the text "Search for study Gypaetus barbatus". The search results are displayed in a table with columns for study name and number of tracks. The first result is "Gypaetus barbatus Maestrazgo 2021" with 7467 tracks. The second result is "Dalla, [n=7467], Gypaetus barbatus" with 7467 tracks. The third result is "Dena, [n=4881], Gypaetus barbatus" with 4881 tracks. The fourth result is "Durall, [n=4778], Gypaetus barbatus" with 4778 tracks. A "Download tracking data" dialog box is open, showing options for sensor type (GPS), date filtering, and output format (Csv, ESRI shapefile, Excel 97, GoogleEarth (Tracks), Excel 2007, GoogleEarth (Home Range)). The dialog box also includes checkboxes for "Include undeployed locations", "Include points marked as outliers", "Add UTM coordinates", and "Add study local time". The background shows a map of the Maestrazgo region in Spain with blue lines representing the tracking paths of the birds.

Movebank
Data Help Tools Archiving News
Search documentation About Chema Logout

Search Studies Search

Search for study Gypaetus barbatus

Download tracking data

Available Sensor Types
GPS

Filter by date
From: yyyy-MM-dd select interval
To: yyyy-MM-dd

Csv ESRI shapefile
 Excel 97 GoogleEarth (Tracks)
 Excel 2007 GoogleEarth (Home Range) ?

Include undeployed locations ?
 Include points marked as outliers ?
 Add UTM coordinates
 Add study local time ?

Download Close

Search result

Sort by Animal Identifier

<input checked="" type="checkbox"/>	Gypaetus barbatus Maestrazgo 2021
<input checked="" type="checkbox"/>	Dalla, [n=7467], Gypaetus barbatus
<input type="checkbox"/>	Dena, [n=4881], Gypaetus barbatus
<input type="checkbox"/>	Durall, [n=4778], Gypaetus barbatus



Descarga de datos

OrniTrack Control Panel

https://www.glosedas.net/cpanel/

<input type="checkbox"/>	Chipiau	194069	56		2021-11-08 10:15:11	2021-11-09 10:15:11	
<input type="checkbox"/>	Dalila (antes Coco)	194073	68		2021-11-08 11:12:09	2021-11-09 11:12:09	
<input type="checkbox"/>	Dena	202159	21		2021-11-08 16:58:01	2021-11-09 16:58:01	

Showing 1 to 10 of 45 devices

Previous 1 2 3 4 5 Next

Name: **Liton**
S/N: 213457, Model: OT-50-2GP, FW: 1003210320

Track length: 500 points

Satélite

Last data received by GPRS: 2021-11-08 02:26:57 (UTC+1)
Next data session expected: 2021-11-09 02:26:57 (UTC+1)
Battery status: 96% (4123mV)
Settings pending for transmission to device: 0
Data bytes in memory before last data session: 264 bytes

Download data (UTC yyyy-mm-dd hh:mm)

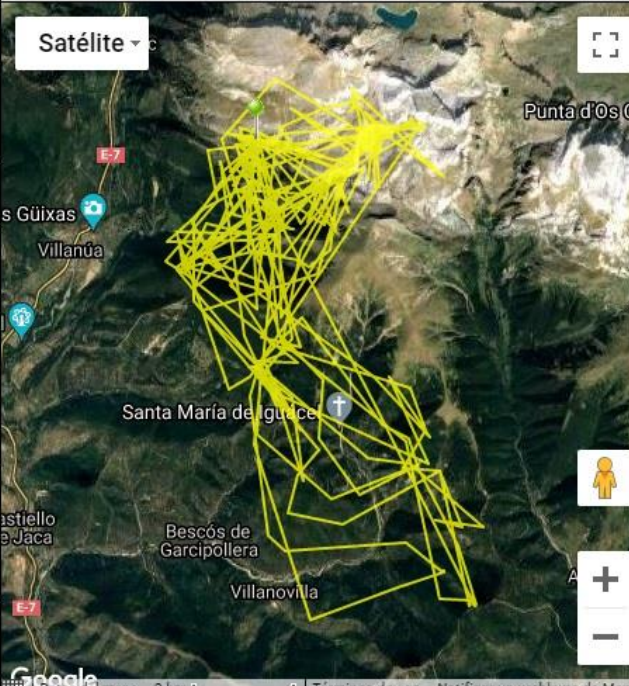
From 2021-11-01 00:00 to 2021-11-08 18:49

GPRS+ALT | GPS+SENSORS

KML | KMZ | CSV | SMS

GPX | Settings

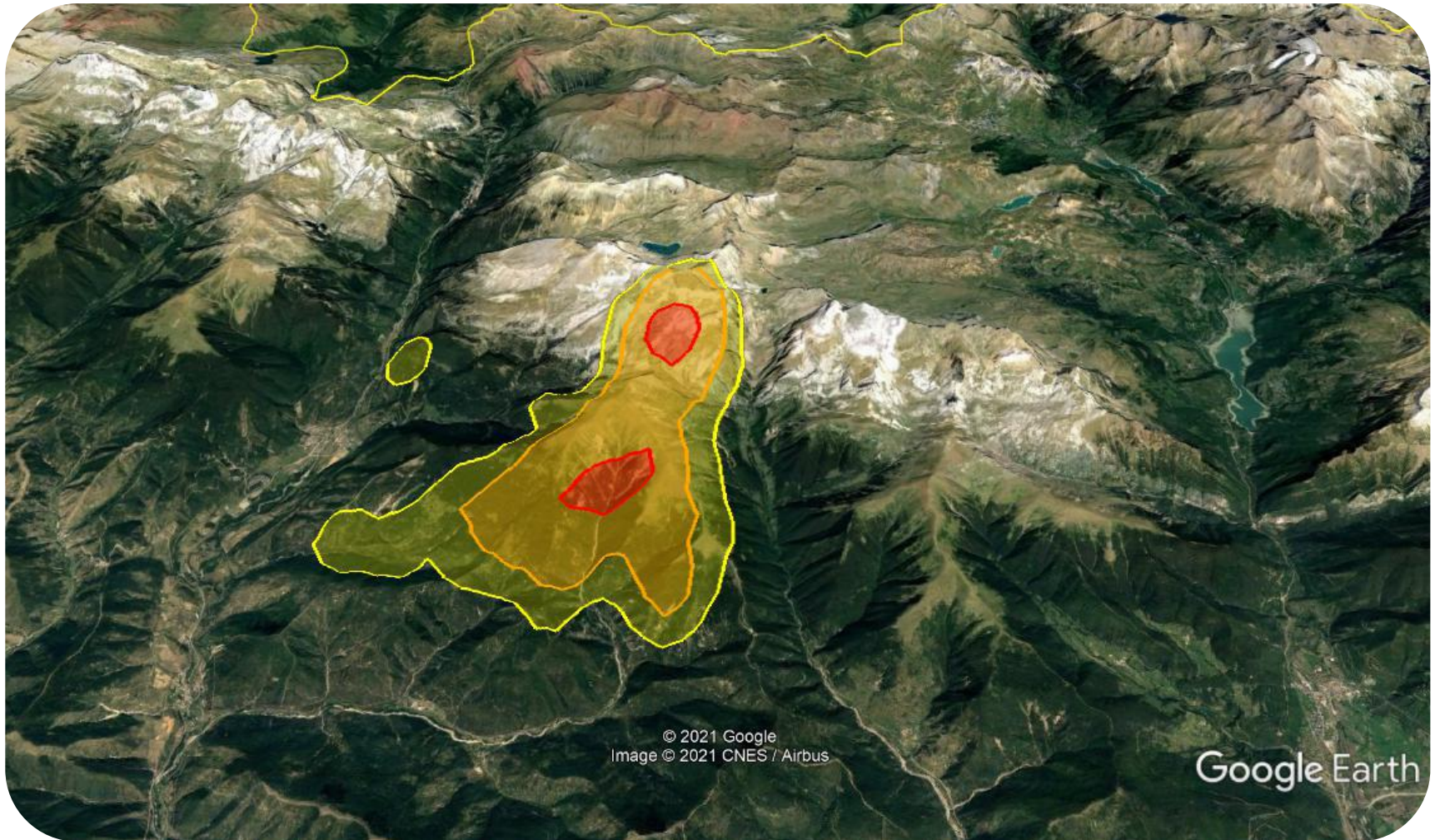
Device settings | Graphs



Escribe aquí para buscar



Generan información



© 2021 Google
Image © 2021 CNES / Airbus

Google Earth

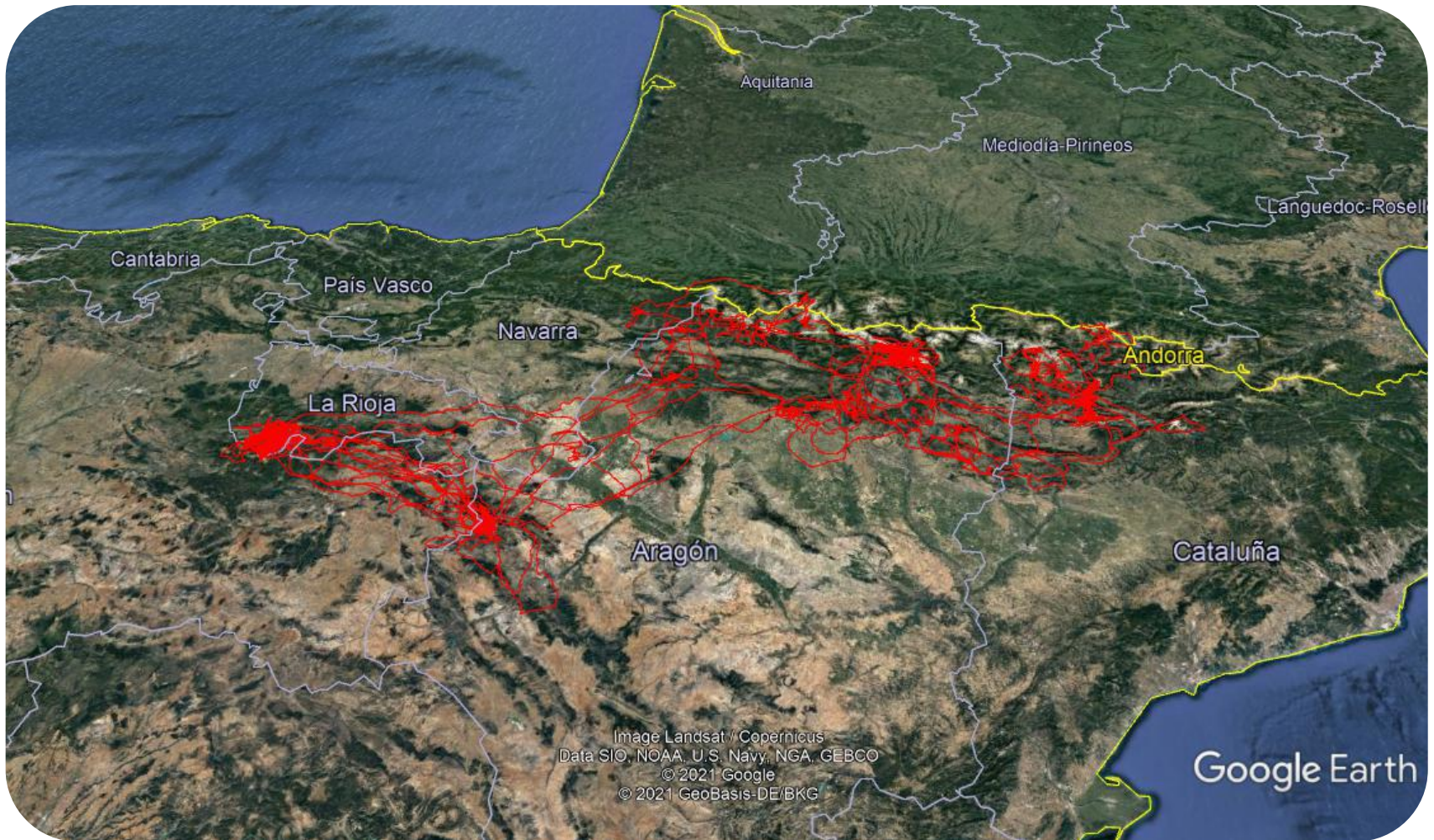
Image © 2021 CNES / Airbus
© 2021 Google



**GOBIERNO
DE ARAGON**

Departamento de Agricultura,
Ganadería y Medio Ambiente

Generan información



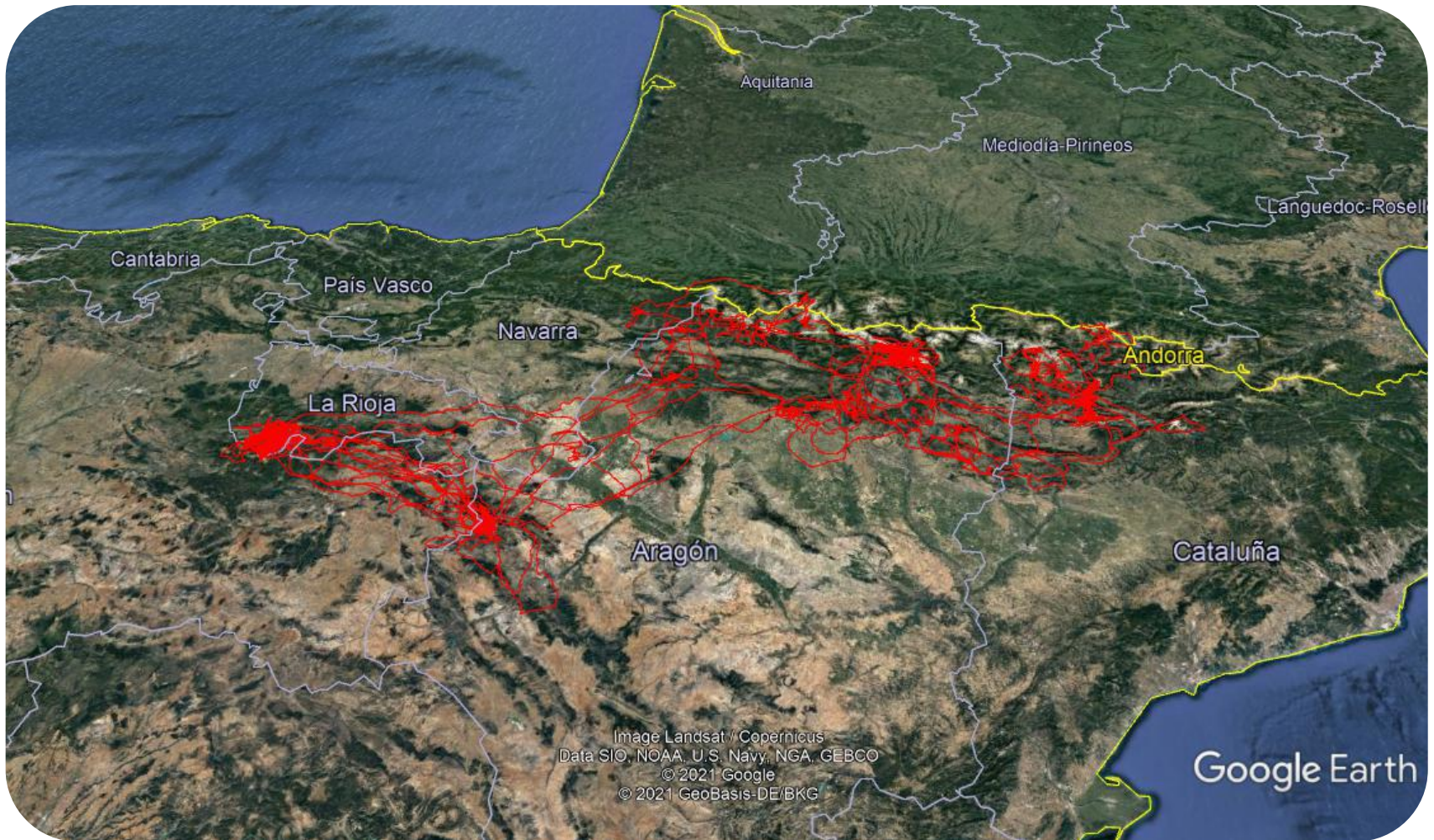
© 2021 GeoBasis-DE/BKG
© 2021 Google
Image Landsat / Copernicus
Data SIO, NOAA, U.S. Navy, NGA, GEBCO



**GOBIERNO
DE ARAGON**

Departamento de Agricultura,
Ganadería y Medio Ambiente

Generan información



**GOBIERNO
DE ARAGON**

Departamento de Agricultura,
Ganadería y Medio Ambiente

Generan información

The **BRB/MKDE** program

(Biased Random Bridges for Movement-based Kernel Density Estimation)

- **Recursion Distribution (RD)**

The spatial distribution of the **number of visits**.

- **Intensity distribution (ID)**

the spatial distribution of the mean **residence time** per visit.

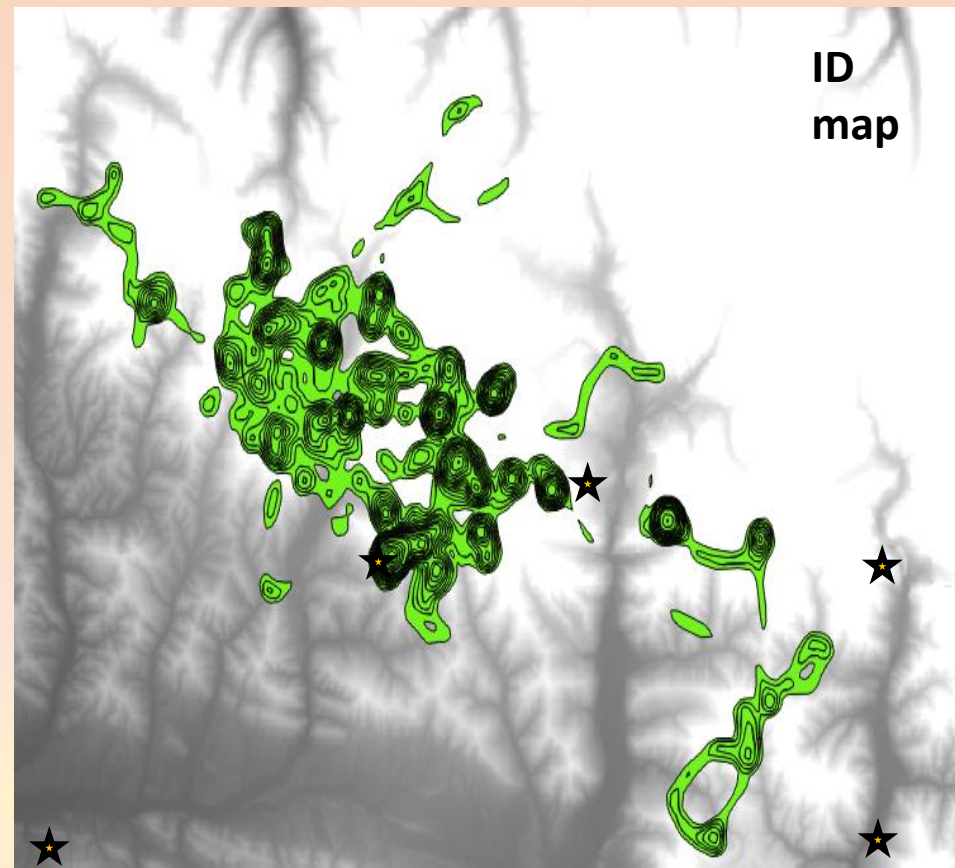
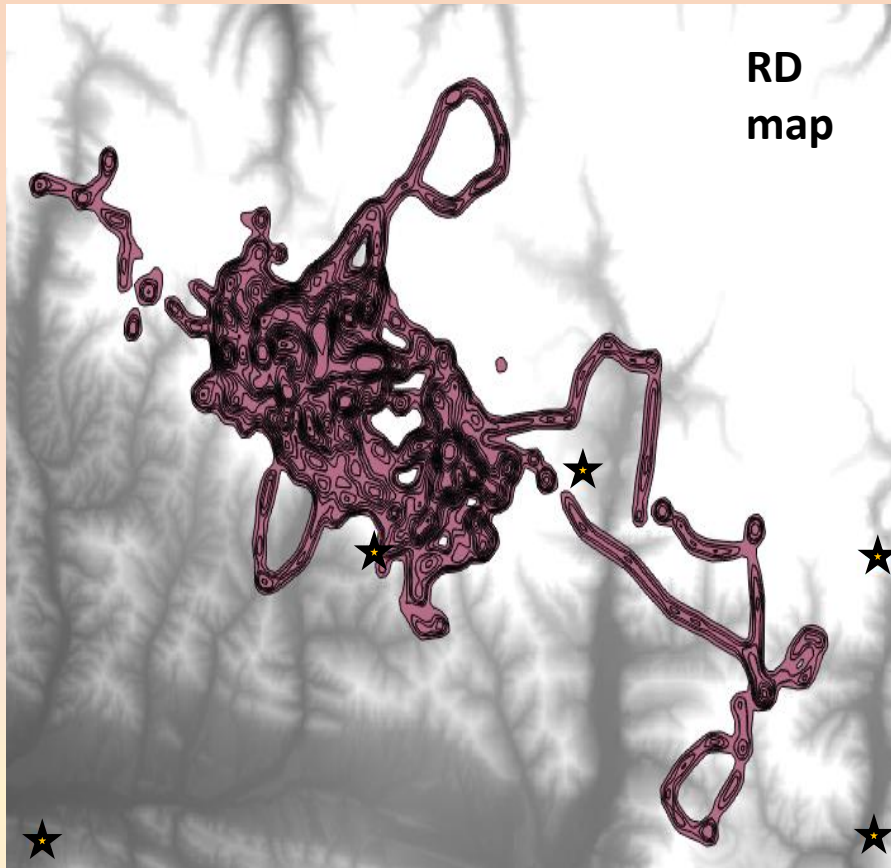
Utilization distribution (UD)

Benhamou 2011

Benhamou & Riotte-Lambert 2012

Generan información

E.g. Cano, a Pyrenean wild bearded vulture



★ Supplementary feeding station



**GOBIERNO
DE ARAGON**

Departamento de Agricultura,
Ganadería y Medio Ambiente